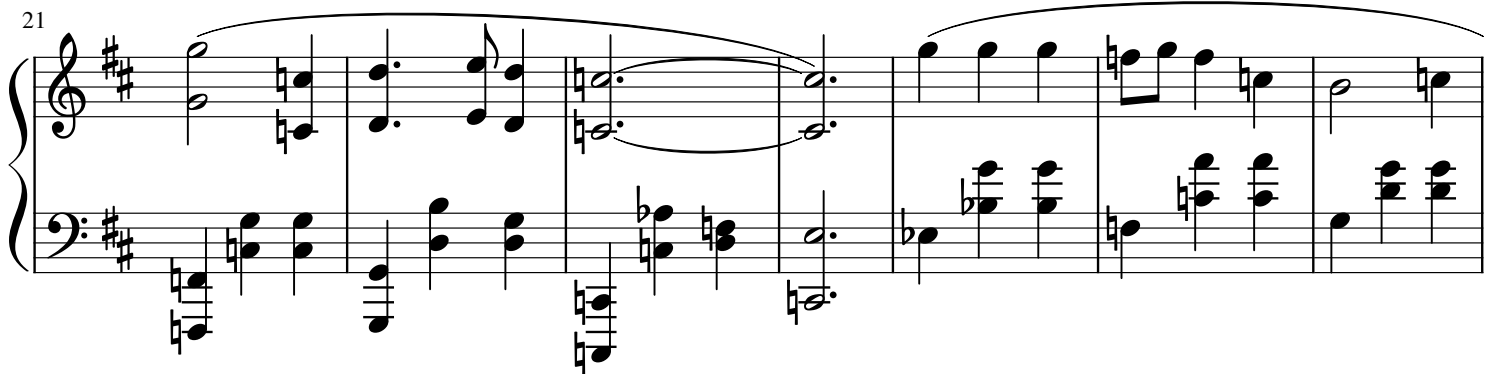
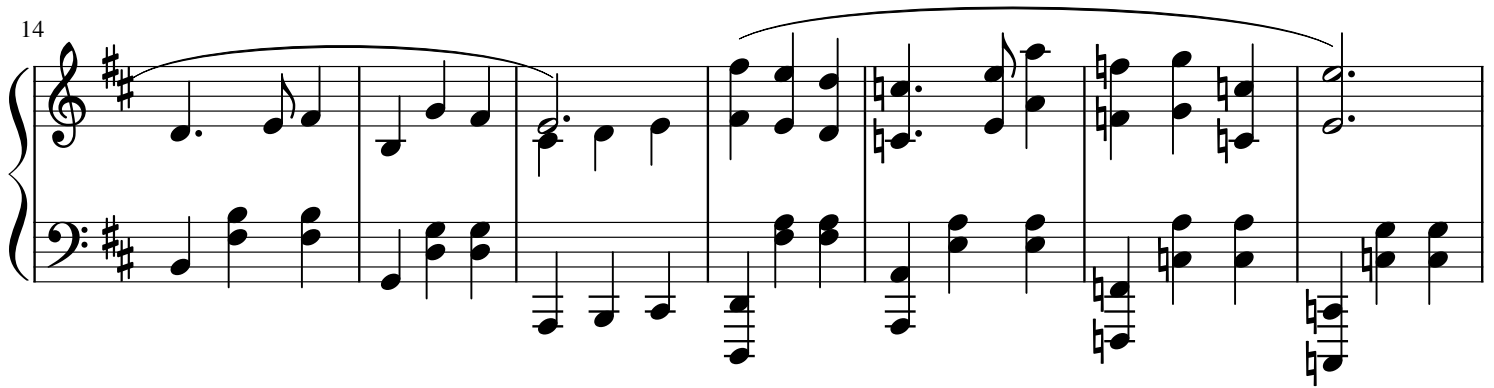
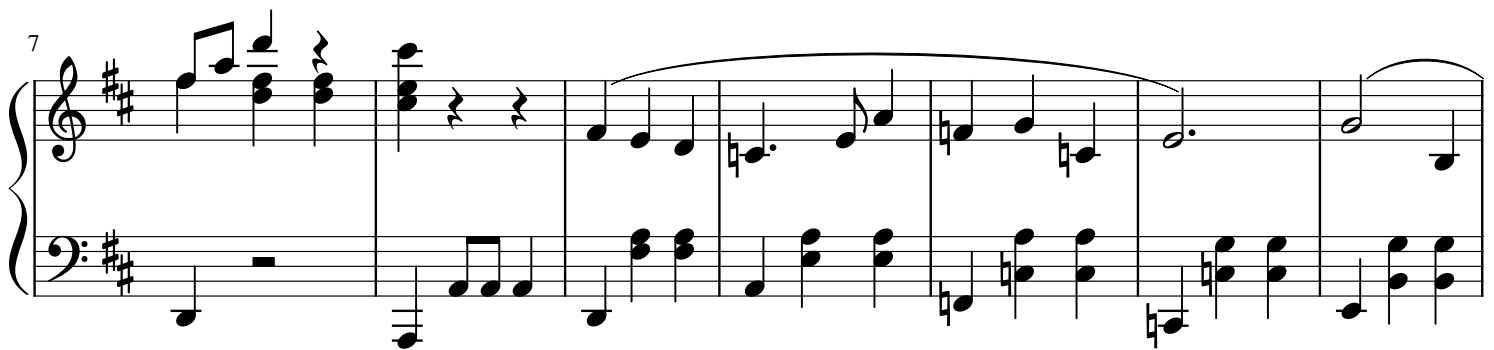
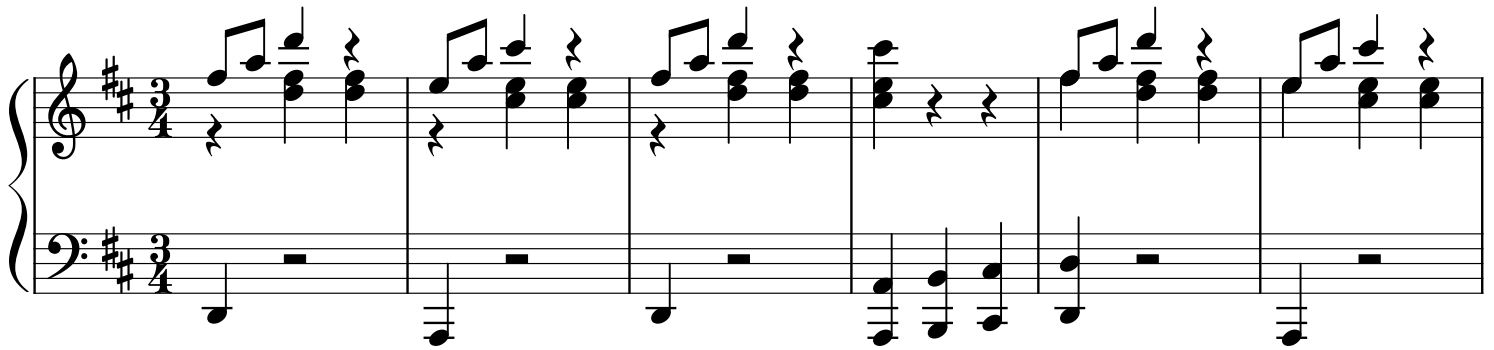


Elder Tale Waltz

from "Log Horizon"

Yasuharu Takanashi

arr. Mark Andrews



28

System 1 (measures 28-33) features a treble and bass staff in D major. The treble staff has a melodic line with a long slur spanning measures 28-33. The bass staff provides harmonic support with chords and single notes. Measure 28 starts with a treble staff melodic phrase and a bass staff chord. Measures 29-32 continue the melodic line in the treble with various chordal accompaniment in the bass. Measure 33 concludes the system with a final chord in both staves.

34

System 2 (measures 34-40) continues the piece. The treble staff has a melodic line with a slur from measure 34 to 40. The bass staff features a more active accompaniment with eighth notes and chords. Measure 34 begins with a treble staff chord and a bass staff chord. Measures 35-39 show the melodic line ascending and then descending, with the bass staff providing a steady accompaniment. Measure 40 ends with a treble staff chord and a bass staff chord.

41

System 3 (measures 41-48) continues the melodic and harmonic development. The treble staff has a melodic line with a slur from measure 41 to 48. The bass staff continues with a steady accompaniment of chords and single notes. Measure 41 starts with a treble staff chord and a bass staff chord. Measures 42-47 show the melodic line moving through various intervals, with the bass staff providing a consistent accompaniment. Measure 48 ends with a treble staff chord and a bass staff chord.

49

System 4 (measures 49-57) continues the piece. The treble staff has a melodic line with a slur from measure 49 to 57. The bass staff continues with a steady accompaniment of chords and single notes. Measure 49 starts with a treble staff chord and a bass staff chord. Measures 50-56 show the melodic line moving through various intervals, with the bass staff providing a consistent accompaniment. Measure 57 ends with a treble staff chord and a bass staff chord.

58

System 5 (measures 58-64) is the final system on this page. The treble staff has a melodic line with a slur from measure 58 to 64. The bass staff continues with a steady accompaniment of chords and single notes. Measure 58 starts with a treble staff chord and a bass staff chord. Measures 59-63 show the melodic line moving through various intervals, with the bass staff providing a consistent accompaniment. Measure 64 ends with a treble staff chord and a bass staff chord.